

GEMINI 550 & GEMINI 700

HIGH CAPACITY DRY BLOCK CALIBRATORS AMBIENT TO 550°C (1022°F) AND AMBIENT TO 700°C (1292°F)

The Gemini Dry Block range differs from our other dry blocks with an enormous well capacity of more than 2.5" While still offering all the advantages you'll find in other Isotech calibrators the Gemini has been designed to have a large block suitable for more probes, or larger probes than can not be accommodated in the Jupiter and Calisto models.

The Gemini is available in two models, the BASIC (B) and the SITE (S). The B model includes a sophisticated temperature controller with a dual display for Set Temperature and Dry Block Temperature. The large block has the benefit of higher capacity but with longer heating and cooling times compared to the fast response models such as the Jupiter 650.



KEY FEATURES

- **Calibrate Whole Calibration Loop**

Using a heat source rather than an electrical simulator a test instrument and probe can be calibrated as a system.

- **High Capacity Block**

Large Calibration volume for many sensors and low loading errors.

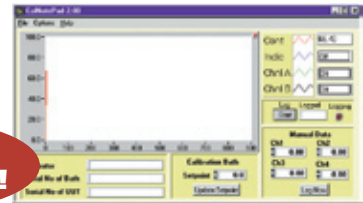
- **Two Operating Ranges**

Fast response from ambient to 550°C (1022°F) or ambient to 700°C (1292°F)

- **Simple To Use**

Outstanding Value for Money!

FREE SOFTWARE!



SPECIFICATIONS

	GEMINIPLUS 550	GEMINIPLUS 700
TEMPERATURE RANGE	35°C to 550°C	50°C to 700°C
ABSOLUTE STABILITY OVER 30 MINUTES	±0.05°C	±0.05°C
COOLS FROM	550 to 275°C in 35 minutes 550 to 60°C in 345 minutes	N/A
HEATS FROM	30 to 550°C in 35 minutes	50 to 700°C in 110 minutes
CALIBRATION VOLUME	2.5" Ø x 6.3" deep (64mm Ø x 160mm)	
STANDARD BLOCK	Four 8mm pockets, four 19.5mm pockets, all 160mm deep	
INDICATOR UNITS	°C, °F, K	
POWER	110VAC or 240VAC (50/60 Hz). 600 Watts	
OVERALL DIMENSIONS (HxWxD)	12" x 7" x 10.3" (302 x 176 x 262mm)	
WEIGHT	GEMINIPLUS 550 19 lbs (7.7 kg)	GEMINIPLUS 700 31 lbs (14 kg)

ORDERING INFORMATION

Included in standard delivery: Temperature calibrator, standard metal insert, Cal Notepad Software, NIST calibration certificate, power supply cable, operation manual

GEMINI 550 LRI-B	Basic model, 35 to 550°C (1022°F)	\$ 4,300
GEMINI 550 LRI-S	Site model, 35 to 550°C (1022°F)	5,150
GEMINI 700 LRI-B	Basic model, 50 to 700°C (1292°F)	5,100
GEMINI 700 LRI-S	Site model, 50 to 700°C (1292°F)	5,950
976-07-01A	Gemini 550 undrilled sleeves for local machining	377
976-07-02A	Gemini 700 undrilled sleeves for local machining	804
935-14-72	Standard probe. Platinum resistance thermometer for use up to 650°C	884
935-14-63	Type N thermocouple for use up to 700°C	196
ISO6-CC	Sturdy carrying case accommodates the unit with room for accessories	495